

# Hisense

Platform Name	Product Name	System Version
MTK9666	32/43/50/55/65/75/86DM66D 43/50/55/65/75/86GM50D	Android 11.0

## IP CONTROL USER MANUAL

V1.1  
Feb, 2024  
Hisense Commercial Display R&D

## Version & Revision History

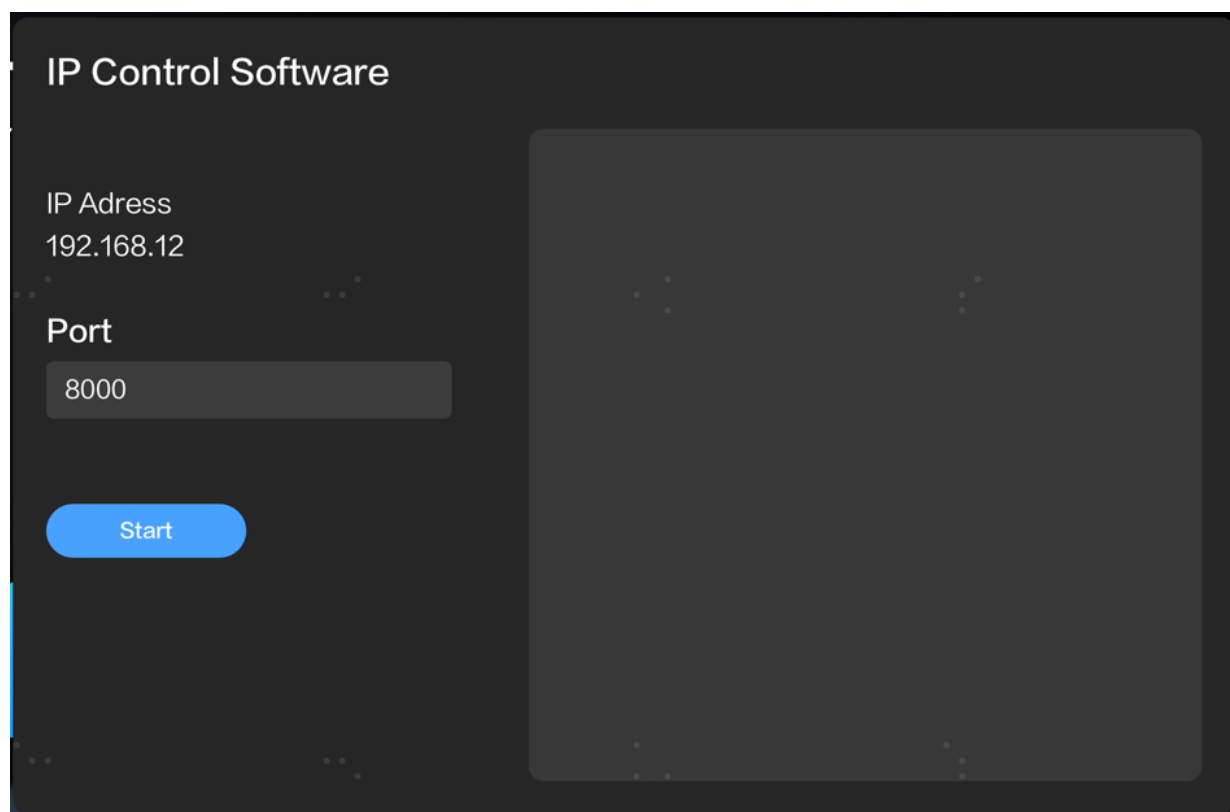
Version	Description	Date
V1.0	The initial release	2023-12
V1.1	<ol style="list-style-type: none"><li>1. Add wired wake-up operation steps</li><li>2. Delete the Power on command</li><li>3. Update the Screen Rotation command</li></ol>	2024-2-28

IP Control function support device local area network(LAN) deployment. The server and client are in the same LAN. The IP control software is a server. It supports TCP/IP network protocol and hex string command format. The software need to input the port number and start. After the starting the software, the client software connect the IP Control software server. The client need to input server IP and server port number.

### Operation step is as below:

1. Open the IP control app

Start the “IP Control” from Apps on the monitor. Open the APK and show as below.



### 2. IP Address Set

IP Address(192.168.1.2) can not edit on the App. It needs to edit via the setting menu on the monitor

### 3. Set Port Number

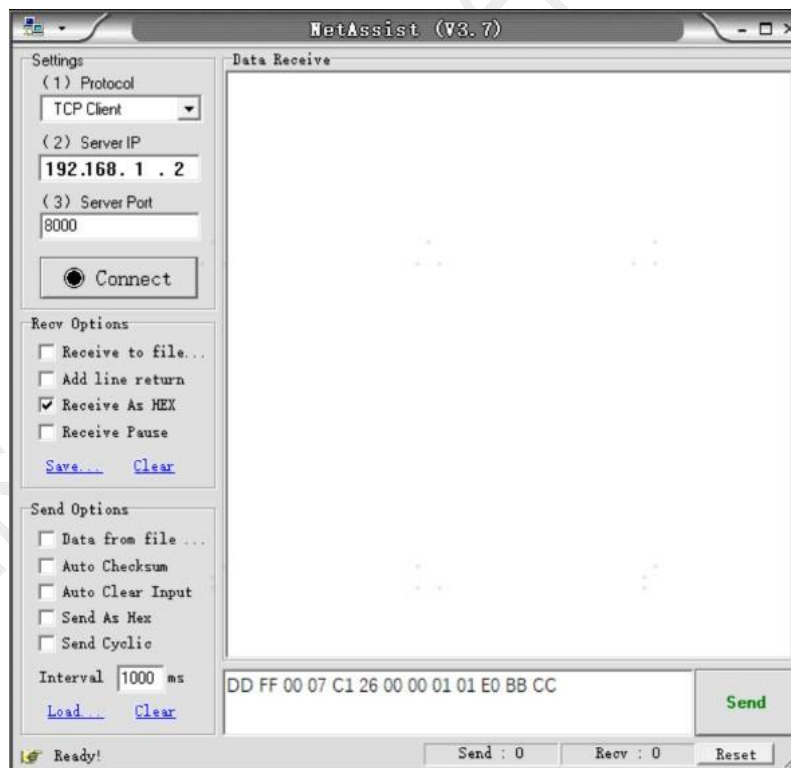
The default port number is 8000. If the port 8000 is occupied, please change the port(5000-12000)

### 4. Start the IP Control(Server)

Click "Start" Button, it will show "Stop" ; Click "Stop" Button, it will show "Start" .

### 5. Client App Connect to IP Control(Server)

You can use the Net Assist software. Select "TCP Client" from the Protocol on the setting, and set the server IP and server port. Finally, click the connect button. Please refer to picture as below.



### 6. Send Command

Connect successful, you can input the hex string command and click "Send" button.

**for example:** Mute Control Command-Mute ON DD FF 00 07  
C1 26 00 00 01 01 E0 BB CC

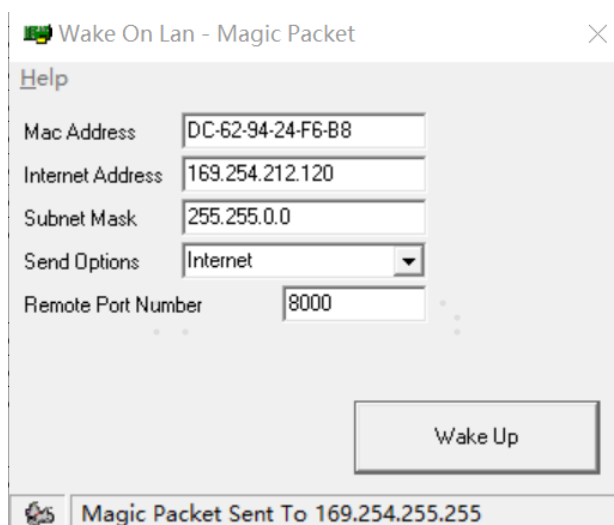
**Note that:** IP Control Command is the same with the RS232 Command. Command format refer to User Manual.

#### 7. Wake on Lan command

Wake On Command(Only Support Wired Network) need Wake on Lan software or send command according to the magic packet format.

Wake On Lan software wake up steps are as follows:

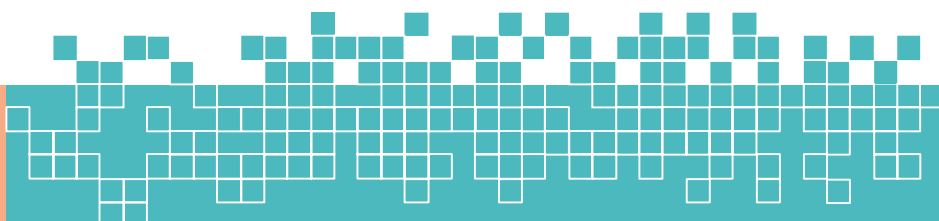
1. Switch on "Wake-on LAN", Setting ->Switch on/off -> Wake-on LAN.
2. Make sure the monitor and PC are in the same Lan, and the monitor connect with wire.
3. Remember the wired MAC, IP address, Subnet Mask and the port number(IP control port).
4. Make sure IP Control working well.
5. Open Wake on Lan software, input the mac, IP, subnet mask and port, then click "Wake Up", the monitor will be waked up.



## IP Control User Guide – V1.0

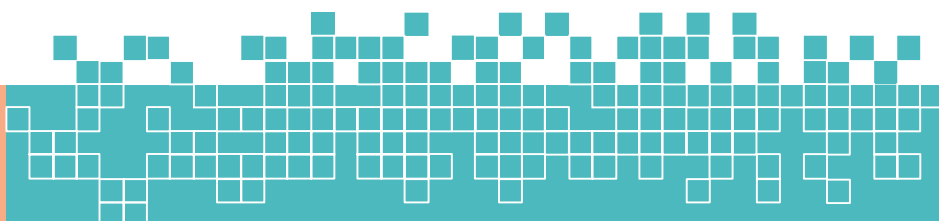
### IP Control Command

Description	Command (HEX Bytes)	Example (PC -> TV ID 01)	TV -> PC
Power Off	DD FF 00 08 C1 15 00 00 xx AA AA yy BB CC	DD FF 00 08 C1 15 00 00 01 AA AA DD BB CC	AB AB 00 08 C1 15 00 00 xx AA AA yy CD CD
Screen Off	DD FF 00 07 C1 31 00 00 xx 00 yy BB CC	DD FF 00 07 C1 31 00 00 01 00 F6 BB CC	AB AB 00 07 C1 31 00 00 xx 00 yy CD CD
Screen On	DD FF 00 07 C1 31 00 00 xx 01 yy BB CC	DD FF 00 07 C1 31 00 00 01 01 F7 BB CC	AB AB 00 07 C1 31 00 00 xx 01 yy CD CD
Reboot	DD FF 00 06 C1 1E 00 00 xx yy BB CC	DD FF 00 06 C1 1E 00 00 01 D8 BB CC	AB AB 00 06 C1 1E 00 00 xx yy CD CD
Set AC Power On Mode	DD FF 00 07 C1 FF 00 09 xx zz yy BB CC	DDFF0007C1FF0009010031BBCC zz: power on mode. 00 – direct, 01 – last, 02 – standby direct: DD FF 00 07 C1 FF 00 09 01 00 31 BB CC last: DD FF 00 07 C1 FF 00 09 01 01 30 BB CC standby: DD FF 00 07 C1 FF 00 09 01 02 33 BB CC	AB AB 00 07 C1 FF 00 09 xx zz yy CD CD
DP Input	DD FF 00 07 C1 08 00 00 xx 16 yy BB CC	DDFF0007C10800000116D9BBCC	AB AB 00 07 C1 08 00 00 xx 16 yy CD CD
VGA Input	DD FF 00 07 C1 08 00 00 xx 17 yy BB CC	DDFF0007C10800000117D8BBCC	AB AB 00 07 C1 08 00 00 xx 17 yy CD CD
HDMI1 Input	DD FF 00 07 C1 08 00 00 xx 0E yy BB CC	DDFF0007C1080000010EC1BBCC	AB AB 00 07 C1 08 00 00 xx 0E yy CD CD
HDMI2 Input	DD FF 00 07 C1 08 00 00 xx 0F yy BB CC	DDFF0007C1080000010FC0BBCC	AB AB 00 07 C1 08 00 00 xx 0F yy CD CD
PC Input	DD FF 00 07 C1 08 00 00 xx 0C yy BB CC	DDFF0007C1080000010CC3BBCC	AB AB 00 07 C1 08 00 00 xx 0C yy CD CD
DVI Input	DD FF 00 07 C1 08 00 00 xx 09 yy BB CC	DDFF0007C10800000109C6BBCC	AB AB 00 07 C1 08 00 00 xx 09 yy CD CD
Set Screen Rotation	DD FF 00 07 C1 35 00 00 xx zz yy BB CC	set screep rotation: Landscape: DD FF 00 07 C1 35 00 00 00 00 F3 BB CC Portrait: DD FF 00 07 C1 35 00 00 01 F2 BB CC	AB AB 00 07 C1 35 00 00 xx zz yy CD CD
Set Mute	DD FF 00 07 C1 26 00 00 xx 01 yy BB CC	DDFF0007C12600000101E0BBCC	AB AB 00 07 C1 26 00 00 xx 01 yy CD CD
Set Unmute	DD FF 00 07 C1 26 00 00 xx 00 yy BB CC	DDFF0007C12600000100E1BBCC	AB AB 00 07 C1 26 00 00 xx 00 yy CD CD
Set Volume	DD FF 00 07 C1 27 00 00 xx zz yy BB CC	DDFF0007C12700000101E1BBCC zz: volume range 0-100	AB AB 00 07 C1 27 00 00 xx zz yy CD CD
Set Backlight Brightness	DD FF 00 08 C1 32 00 00 xx 06 zz yy BB CC	ex: set brightness to 32 - zz = 0x20 DDFF0008C1320000010620DCBBCC	AB AB 00 08 C1 32 00 00 xx 06 zz CD CD
Set Backlight Brightness Auto Adjust	DD FF 00 07 C1 34 00 00 xx zz yy BB CC	ex: set brightness auto adust off DDFF0007C13400000100F3BBCC zz = 00 - off, 01 - on	AB AB 00 07 C1 34 00 00 xx zz yy CD CD
Set Date	DD FF 00 09 C1 1C 00 00 xx zz zz yy BB CC	ex: set date to 23.Jan.2 DDFF0009C11C000001170102C1BBCC zz zz zz = Year Month Day	AB AB 00 09 C1 1C 00 00 xx zz zz yy CD CD zz zz zz = FF FF FF when error
Set Time	DD FF 00 09 C1 1D 00 00 xx zz zz yy BB CC	ex: set time to 12:25:2 DDFF0009C11D0000010C1902C3BBCC zz zz zz = Hour Minute Second	AB AB 00 09 C1 1D 00 00 xx zz zz yy CD CD zz zz zz = FF FF FF when error
Set Schedule for Power On	DD FF 00 09 C1 3E 00 00 xx tt zz yy BB CC	ex: power on at 9:10 every day DDFF0009C13E00000101090AF5BBCC tt = 00 - turn off schedule, 01 - everyday zz zz = Hour Minute Tips: If the device has been set to power on and off at a scheduled time, sending this command will clear the original settings, and leaving only the one sent.	AB AB 00 09 C1 3E 00 00 xx zz zz yy CD CD



## IP Control User Guide – V1.0

<b>Set Schedule for Power Off</b>	DD FF 00 09 C1 3F 00 00 xx tt zz yy BB CC	ex: power off at 18:10 every day DDFF0009C13F00000101120AEFBCC tt = 0 - turn off schedule, 1 - everyday zz zz = Hour Minute Tips: If the device has been set with a timed power on/off command, all previously set power on/off will be turned off	AB AB 00 09 C1 3F 00 00 xx zz yy CD CD
<b>Set Brightness</b>	DD FF 00 07 C1 36 00 00 xx zz yy BB CC current source must be: DP, VGA, HDMI, PC, DVI	ex: set brightness to 32 - zz = 0x20 DDFF0007C13600000120D1BBCC	AB AB 00 07 C1 36 00 00 xx zz yy CD CD
<b>Set Contrast</b>	DD FF 00 07 C1 37 00 00 xx zz yy BB CC current source must be: DP, VGA, HDMI, PC, DVI	ex: set contrast to 32 - zz = 0x20 DDFF0007C13700000120DoBBCC	AB AB 00 07 C1 37 00 00 xx zz yy CD CD
<b>Set Sharpness</b>	DD FF 00 07 C1 38 00 00 xx zz yy BB CC current source must be: DP, VGA, HDMI, PC, DVI	ex: set sharpness to 32 - zz = 0x20 DDFF0007C13800000120DFBBCC	AB AB 00 07 C1 38 00 00 xx zz yy CD CD
<b>Set Color Temperature</b>	DD FF 00 07 C1 39 00 00 xx zz yy BB CC current source must be: DP, VGA, HDMI, PC, DVI	ex: set colour temperature to 32 - zz = 0x20 DDFF0007C13900000120DEBBCC	AB AB 00 07 C1 39 00 00 xx zz yy CD CD
<b>Set Noise Reduction</b>	DD FF 00 07 C1 3A 00 00 xx zz yy BB CC current source must be: DP, VGA, HDMI, PC, DVI	ex: set noise reduction to High - zz = 0x03 DDFF0007C13A00000103FEBBCC zz = 01 - low, 02 - medium, 03 - high, 04 - auto, 00 - off	AB AB 00 07 C1 3A 00 00 xx zz yy CD CD
<b>Set Image Scaling</b>	DD FF 00 07 C1 3B 00 00 xx zz yy BB CC current source must be: DP, VGA, HDMI, PC, DVI	ex: set image scaling to Full - zz = 0x03 DDFF0007C13B00000103FBBCC zz = 00 - full, 01 - 16:9, 02 - 4:3, 03 - scaling 1, 04 - scaling 2, 05 - point to point	AB AB 00 07 C1 3B 00 00 xx zz yy CD CD
<b>Set Picture Mode</b>	DD FF 00 07 C1 0F 06 00 xx zz yy BB CC	ex: set picture mode to movie mode - zz = 0x03 DDFF0007C10F060001030CBBCC zz = 00 - standard, 01 - bright, 02 - soft, 03 - Movie, 04 - Text, 5 - gaming 12 - natural	AB AB 00 07 C1 0F 06 00 xx zz yy CD CD
<b>Set Sound Mode</b>	DD FF 00 07 C1 FF 00 03 xx zz yy BB CC	ex: set sound mode to standard mode - zz = 0x00 DDFF0007C1FF000301003BBBCC zz = 00 - standard, 01 - music, 02 - news, 08 - movie, 10 - sports, 20 - custom, 30 - voice, 40 - meeting	AB AB 00 07 C1 FF 00 03 xx zz yy CD CD
<b>Set Eye Protection Mode</b>	DD FF 00 07 C1 FF 00 1E xx zz yy BB CC	ex: set eye protection mode on - zz = 0x01 DDFF0007C1FF001E010127BBCC zz = 00 - off, 01 - on	AB AB 00 07 C1 FF 00 1E xx zz yy CD CD
<b>VGA Auto Adjust</b>	DD FF 00 07 C1 01 00 00 xx yy BB CC current source must be VGA	ex: VGA Auto Adjust DDFF0007C101000001C6BBCC zz = 00 - off, 01 - on	AB AB 00 07 C1 01 00 00 xx yy CD CD
<b>Set anti-burn-in (image retention)</b>	DD FF 00 07 C1 33 00 00 xx zz yy BB CC	ex: set anti-burn-in on DDFF0007C13300000101F4BBCC zz = 00 - off, 01 - on	AB AB 00 07 C1 33 00 00 xx zz yy CD CD



## IP Control User Guide – V1.0

<b>Set Power on delay</b>	DD FF 00 07 C1 3C 00 00 xx zz yy BB CC	ex: set power on delay to 10s DDFF0007C13C0000010AF1BBCC zz = 00 - off, others - delay time, range: 2s - 255s	AB AB 00 07 C1 3C 00 00 xx zz yy CD CD												
<b>Set Video Wall</b>	DD FF 00 09 C1 0A 00 00 xx zz zz yy BB CC	ex: vertical 3 devices, horizontal 4 devices, device position: 6 DDFF0009C10A000001030406C2BBCC zz: how many devices in vertical zz: how many devices in horizontal zz: current device position	AB AB 00 09 C1 0A 00 00 xx zz zz yy CD CD <table border="1" data-bbox="1089 348 1403 464"> <tr><td>1</td><td>2</td><td>3</td></tr> <tr><td>4</td><td>5</td><td>6</td></tr> <tr><td>7</td><td>8</td><td>9</td></tr> <tr><td>10</td><td>11</td><td>12</td></tr> </table>	1	2	3	4	5	6	7	8	9	10	11	12
1	2	3													
4	5	6													
7	8	9													
10	11	12													
<b>Set Static IP Address of LAN</b>	DD FF 00 16 C1 1B 30 00 xx zz ... zz yy BB CC	Ex: set IP 10.16.150.225, subnet mask: 255.255.248.0, gateway: 10.16.144.1, DNS: 10.16.144.2 DDFF0016C11B3000010A1096E1FFFF8000A1090010A10900249BBCC zz .. zz - 16 bytes, IP address - 4 bytes, Subnet mask - 4 bytes, gateway - 4 bytes, DNS - 4 bytes	AB AB 00 16 C1 1B 30 00 xx zz ... zz yy CD CD												
<b>Set USB Lock</b>	DD FF 00 07 C1 FF 00 0E xx zz yy BB CC	ex: lock USB DDFF0007C1FF000E010036BBCC zz = 00 - lock USB, 01 - enable USB	AB AB 00 07 C1 FF 00 0E xx zz yy CD CD												
<b>Factory Reset</b>	DD FF 00 06 C1 10 00 00 xx yy BB CC	DDFF0006C110000001D6BBCC	AB AB 00 06 C1 10 00 00 xx yy CD CD												
<b>Query TV Status</b>	DD FF 00 06 C1 28 00 00 xx yy BB CC	DDFF0006C128000001EEBBCC	AB AB 00 06 C1 28 00 00 xx zz zz yy CD CD zz: volume zz zz: 05 01 - PC, 05 02 - DVI, 05 03 - DP, 05 04 - HDMI2, 05 05 - HDMI1, 08 01 - VGA zz: 00 - power on, FF - power off zz: 01 - mute; 00 - unmute zz: 00 - no signal, 01 - has signal												
<b>Query Screen Status</b>	DD FF 00 06 C1 32 00 01 xx yy BB CC	DDFF0006C110000001D6BBCC	AB AB 00 07 C1 32 00 01 xx zz yy CD CD zz: 00 - screen off; 01 - screen on												
<b>Query Source</b>	DD FF 00 06 C1 1A 00 00 xx yy BB CC	DDFF0006C11A000001DCBBCC	AB AB 00 08 C1 1A 00 00 xx zz zz yy CD CD zz zz - source, refer to user menu for source definition												
<b>Query SW Version</b>	DD FF 00 06 C1 1B 00 00 xx yy BB CC	DDFF0006C11B000001DDBBCC	AB AB 00 09 C1 1B 00 00 xx zz zz yy CD CD zz zz zz - Year Month Date												
<b>Query Backlight Brightness</b>	DD FF 00 06 C1 3E 00 24 xx yy BB CC	DDFF0006C13E000001F8BBCC	AB AB 00 LL C1 3E 00 24 xx zz zz yy CD CD zz: 01 - bright, 02 - soft, 03 - auto adjust, 04 - stereo frequency conversion, 05 - Comfort frequency conversion, 06 - custom zz: when first zz is 06 custom, this byte means backlight brightness value: 0-30 LL: when first zz is zz, LL = 08, otherwise, LL = 07												
<b>Query Brightness</b>	DD FF 00 06 C1 36 00 01 xx yy BB CC	DDFF0006C136000101F0BBCC	AB AB 00 07 C1 36 00 01 xx zz yy CD CD zz is the brightness value												
<b>Query Network Status</b>	DD FF 00 06 C1 FF 00 16 xx yy BB CC	DDFF0006C1FF0016012FBBCC	AB AB 00 07 C1 FF 00 16 xx zz yy CD CD zz: 00 - no network connection; 01 - network connected												
<b>Query Sound Mode</b>	DD FF 00 06 C1 FF 00 02 xx yy BB CC	DDFF0006C1FF0002013BBBCC	AB AB 00 07 C1 FF 00 02 xx zz yy CD CD zz = 00 - standard, 01 - music, 02 - news, 08 - movie, 10 - sports, 20 - custom, 30 - voice, 40 - meeting												



## IP Control User Guide – V1.0

<b>Query AC Power On Status</b>	DD FF 00 06 C1 FF 00 08 xx yy BB CC	DDFF0006C1FF00080131BBCC	AB AB 00 07 C1 FF 00 08 xx zz yy CD CD zz: 00 - power on; 01 - Last mode; 02 - standby
<b>Query IP Address</b>	DD FF 00 06 C1 1B 20 00 xx yy BB CC	DDFF0006C11B200001FDBBCC	AB AB 00 16 C1 1B 20 00 xx zz ... zz yy CD CD zz zz zz zz - IP address zz zz zz zz - Subnet mask zz zz zz zz Gateway zz zz zz zz - DNS
<b>Query Device Temperature</b>	DD FF 00 06 C1 FE 00 00 xx yy BB CC	DDFF0006C1FE00000138BBCC	AB AB 00 07 C1 FE 00 00 xx zz yy CD CD zz: temperature in centigrade
<b>Query Picture Mode</b>	DD FF 00 06 C1 6D 00 00 xx yy BB CC	DD FF 00 06 C1 6D 00 00 64 CE BB CC	AB AB 00 07 C1 6D 00 00 xx zz yy CD CD zz: 00 – standard, 01 – bright, 06 – AI, 07 – user, 02 – soft, 03 – movie, 04 – text, 05 – game, 12- nature
<b>Query USB Status</b>	DD FF 00 06 C1 6E 00 00 xx yy BB CC	DD FF 00 06 C1 6E 00 00 64 CD BB CC	AB AB 00 07 C1 6E 00 00 xx zz yy CD CD zz: 00 - off, 01 - on
<b>Query Eye Protection Mode</b>	DD FF 00 06 C1 FF 00 1D xx yy BB CC	DDFF0006C1FF001D0124BBCC	AB AB 00 07 C1 FF 00 1D xx zz yy CD CD zz: 00 - Off; 01 - On
<b>Query SN</b>	DD FF 00 06 C1 FF 00 0B xx yy BB CC	DDFF0006C1FF000B0132BBCC	AB AB 00 1D C1 FF 00 0B xx zz... zz yy CD CD zz .. zz: 23 bytes serial number
<b>Query Device ID</b>	DD FF 00 06 C1 FF 00 0D xx yy BB CC	DDFF0006C1FF000D0134BBCC	AB AB 00 26 C1 FF 00 0D xx zz... zz yy CD CD zz .. zz: 32 bytes device ID
<b>Query MAC Address</b>	DD FF 00 06 C1 6C 00 00 xx yy BB CC	DDFF0006C16C000001AABBCC	AB AB 00 0C C1 6C 00 00 xx zz... zz yy CD CD zz .. zz: 6 bytes
<b>Query volume</b>	DD FF 00 06 C1 7D 00 00 xx yy BB CC	DD FF 00 06 C1 7D 00 00 64 DE BB CC	AB AB 00 07 C1 7D 00 00 xx zz yy CD CD zz: volume
<b>Query Serial Port ID</b>	DD FF 00 06 C1 1B 10 00 xx yy BB CC	DD FF 00 06 C1 1B 10 00 64 A8 BB CC	AB AB 00 06 C1 1B 10 00 xx zz yy CD CD zz: serial port ID. Settings -> signal manager -> serial port ID
<b>Query brand</b>	DD FF 00 06 C1 FE 00 01 xx yy BB CC	DD FF 00 06 C1 FE 00 01 64 5C BB CC	AB AB 00 06 C1 FE 00 01 xx zz... zz yy CD CD zz... zz: brand. ex: hisense (ASCII)
<b>Query model</b>	DD FF 00 06 C1 FE 00 02 xx yy BB CC	DD FF 00 06 C1 FE 00 02 64 5F BB CC	AB AB 00 06 C1 FE 00 02 xx zz... zz yy CD CD zz... zz: model name
<b>Send Remote Controller Key Code</b>	DD FF 00 08 C1 17 00 00 xx zz yy BB CC	ex: send menu key: zz zz = 00 00 DDFF0008C1170000010000DFBBCC zz zz = 00 00 - Menu; 00 01 - UP, 00 02 - DOWN, 00 03 - LEFT, 00 04 - RIGHT, 00 05 - OK, 00 06 - Return, 00 07 - Source	AB AB 00 08 C1 17 00 00 xx zz yy CD CD
<b>Open Settings</b>	DD FF 00 06 C1 41 00 00 xx yy BB CC	DDFF0006C14100000187BBCC	AB AB 00 06 C1 41 00 00 xx yy CD CD
<b>Open Home</b>	DD FF 00 06 C1 FF 00 1A xx yy BB CC	DDFF0006C1FF001A0123BBCC	AB AB 00 06 C1 FF 00 1A xx yy CD CD
<b>Open CMS</b>	DD FF 00 06 C1 FF 00 13 xx yy BB CC	DDFF0006C1FF0013012ABBCC	AB AB 00 06 C1 FF 00 13 xx yy CD CD
<b>Open Screen Cast</b>	DD FF 00 06 C1 43 00 00 xx yy BB CC	DDFF0006C14300000185BBCC	AB AB 00 06 C1 43 00 00 xx yy CD CD
<b>Turn on Hotspot</b>	DD FF 00 06 C1 44 00 00 xx yy BB CC	DDFF0006C14400000182BBCC	AB AB 00 06 C1 44 00 00 xx yy CD CD
<b>Take Screenshot</b>	DD FF 00 06 C1 4B 00 00 xx yy BB CC	DDFF0006C14B0000018DBBCC	AB AB 00 06 C1 4B 00 00 xx yy CD CD
<b>Freeze Screen</b>	DD FF 00 07 C1 0F 08 00 xx zz yy BB CC	DD FF 00 07 C1 0F 08 00 01 01 C1 BB CC zz = 01 - freeze; 00 – unfreeze	AB AB 00 07 C1 0F 08 00 xx zz yy CD CD

