



## HN75WR80U

### 75" ADVANCED INTERACTIVE DISPLAY

Hisense Interactive Display solutions deliver unrivalled performance and market leading value. Combining the power of a digital display, tablet, electronic whiteboard and video conference device, Hisense delivers the ultimate all-in-one display solution. Superior processors and the latest touch technology provide best-in-class user experiences while seamless wireless integration makes collaboration both simple and engaging.



#### Highlights



##### Smooth Touch

The built-in whiteboard app allows users to smoothly write, draw and erase information on-screen through touch, either by hand or with a stylus pen.



##### Accurate as analog

The IR software precisely recognizes touch points as little as 2 mm making it as accurate as the experience of writing with pen and paper.



##### Collaborative interaction

The touchscreen recognises up to 20 touches at once which is ideal for simultaneous use by meeting participants.



##### Intuitive controls

With your fingers you will, among other things, be able to switch between tasks, annotate content from any source, make handwritten notes, zoom in / out and undo changes.



##### Smooth and speedy processing

The open Android 8.0 platform not only guarantees smooth processing, but also supports the installation of Android-based application.



##### Powerful Architecture

Expect unstoppable performance by an octa-core processor and 3+32GB large memory.



##### Comfortable viewing

Each of our Interactive Digital Boards has a filter to effectively reduce blue light so your eyes remain comfortable even when using the screen for longer periods of time.



##### Immersive Sound

Thanks to embedded dual-channel Dolby sound the Hisense WR series will give their users and audiences a cinematic audio-visual experience.



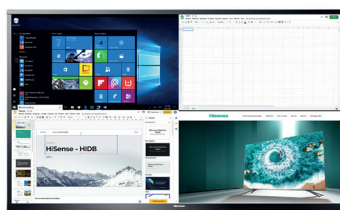
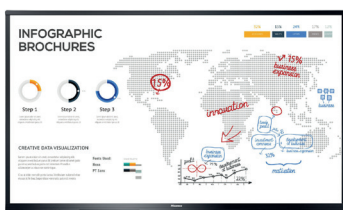
##### Tempered Glass

Hisense's WR series have heat treated tempered glass preventing any damage to the touch panels.



##### Anti-Glare

Optical technology diffuses mirror-like reflections and bright lights to help keep what's on your screen clear and visible.



## Specifications

### Interactive Display Panel

LCD Size	75"
Backlight Type	D-LED
Resolution	3840x2160(pixels)
Brightness	350cd/m <sup>2</sup> (typ.)
Contrast Ratio	1200:1(typ.)
Response Time	8ms (typ.)
Refreshing Frequency	60Hz
Viewing Angle	178°(H) / 178°(V)
Life Time	50,000 hrs (min.)
Color Gamut(X% NTSC)	72%
Display Colors	1.07B(10bit)

### System

OS	Android 8.0
Language	Chinese/English/German/French/Italian /Spanish/Thai/Indonesian
RAM	3GB
ROM	32GB

### Speaker

Audio Output Power	2x15W/8Ω
--------------------	----------

### Connectivity

Input	HDMI IN x 2 DP IN x 1 VGA IN x 1 OPS(optional) x1 LAN x 1 USB x 4 Touch x 1 PC-Audio IN x 1 RS232 IN x 1
Output	HDMI OUT x 1 S/PDIF OUT x 1

### Power

Power Requirements	AC 100 V ~ 240 V, 50/60 Hz
Power Consumption Without OPS	240W

### Touch

Sensing Type	Infrared Touch Frame
Surface Protection	4mm Anti-Glare Glass
Infrared Touch	≤20 points
Touch Accuracy	90%(±1mm)
Response Time	≤8ms
Minimum Touch Object	≥2mm

### Certification

Standard Certification CB,CE,ICASA,ERP  
EAN 6942147457115



### Physical

Housing Color	Black
Product Size (W x H x D)	1720 x 1048 x 105mm 67.7 x 41.3 x 4.1 inch
Package Size (W x H x D)	1885 x 1218 x 300mm 74.6 x 48.5 x 12.2 inch
Net Weight	52kg / 114.66lbs
Packed Weight	68kg / 149.94lbs
VESA	600x400mm, 4-M8 screw

### Optional

Basic	Mobile Cart OPS
-------	--------------------

### What's in the box

Basic	User manual Pen x 2 Remote Control Hanging Wheel x 4 Wireless Cast Power Cable Battery x 2 Wall Mount Bracket
-------	--

### Dimensions

**75"** 1720 x 1048 x 105mm / 67.7 x 41.3 x 4.1 inch  
52 kg / 114.66lbs

