



86WR60AE

86" ADVANCED INTERACTIVE DISPLAY

Hisense Interactive Display solutions deliver unrivalled performance and market leading value. Combining the power of a digital display, tablet, electronic whiteboard and video conference device, Hisense delivers the ultimate all-in-one display solution. Superior processors and the latest touch technology provide best-in-class user experiences while seamless wireless integration makes collaboration both simple and engaging.



Highlights



Smooth Touch

The built-in whiteboard app allows users to smoothly write, draw and erase information on-screen through touch, either by hand or with a stylus pen.



Accurate as analog

The IR software precisely recognizes touch points as little as 2 mm making it as accurate as the experience of writing with pen and paper.



Collaborative interaction

The touchscreen recognises up to 20 touches at once which is ideal for simultaneous use by meeting participants.



Intuitive controls

With your fingers you will, among other things, be able to switch between tasks, annotate content from any source, make handwritten notes, zoom in / out and undo changes.



Smooth and speedy processing

The open Android 8.0 platform not only guarantees smooth processing, but also supports the installation of Android-based application.



Powerful Architecture

Expect unstoppable performance by an octa-core processor and 3+32GB large memory.



Comfortable viewing

Each of our Interactive Digital Boards has a filter to effectively reduce blue light so your eyes remain comfortable even when using the screen for longer periods of time.



Immersive Sound

Thanks to embedded dual-channel Dolby sound the Hisense WR series will give their users and audiences a cinematic audio-visual experience.



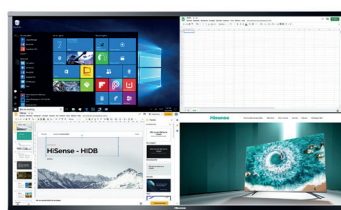
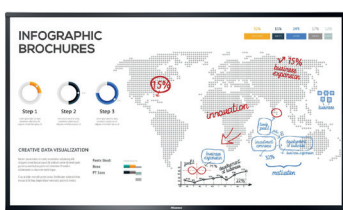
Tempered Glass

Hisense's WR series have heat treated tempered glass preventing any damage to the touch panels.



Anti-Glare

Optical technology diffuses mirror-like reflections and bright lights to help keep what's on your screen clear and visible.



Specifications

Interactive Display Panel

LCD Size	86"
Backlight Type	D-LED
Resolution	3840x2160(pixels)
Brightness	350cd/m²(typ.)
Contrast Ratio	1200:1(typ.)
Response Time	8ms (typ.)
Refreshing Frequency	60Hz
Viewing Angle	178° (H) / 178° (V)
Life Time	50,000 hrs (min.)
Color Gamut(X% NTSC)	85%
Display Colors	1.07B(10bit)

System

OS	Android 8.0
Language	Chinese/English/German/French/Italian /Spanish/Thai/Indonesian
RAM	3GB
ROM	32GB

Speaker

Audio Output Power 2x15W/8Ω

Connectivity

Input	HDMI IN x 2
	DP IN x 1
	VGA IN x 1
	OPS(optional) x1
	LAN x 1
	USB x 4
	Touch x 1
	PC-Audio IN x 1
Output	RS232 IN x 1
	HDMI OUT x 1
	S/PDIF OUT x 1

Power

Power Requirements	AC 100 V ~ 240 V, 50/60 Hz
Power Consumption Without OPS	460W

Touch

Sensing Type	Infrared Touch Frame
Surface Protection	4mm Anti-Glare Glass
Infrared Touch	≤20 points
Touch Accuracy	90%(±1mm)
Response Time	≤8ms
Minimum Touch Object	≥2mm

Certification

Standard Certification	CB,CE,ICASA,ERP
EAN	6973172940136



Physical

Housing Color	Black
Product Size (W x H x D)	1972 x 1192 x 116mm 77.6 x 46.9 x 4.6 inch
Package Size (W x H x D)	2171 x 1382 x 341mm 85.5 x 54.4 x 13.4 inch
Net Weight	75kg / 165.34lbs
Packed Weight	100kg / 220.5lbs
VESA	1000x400mm, 4-M8 screw

Optional

Basic	Mobile Cart
	OPS

What's in the box

Basic	User manual
	Pen x 2
	Remote Control
	Hanging Wheel x 4
	Wireless Cast
	Power Cable
	Battery x 2
Wall Mount Bracket	

Dimensions

86" 1972 x 1192 x 116mm / 77.6 x 46.9 x 4.6 inch
75 kg / 165.34 lbs

