



HME8C55U

55 INCH ENDOSCOPIC MONITOR

Hisense HME8C55U is a 55-inch professional 4K ultra-high-definition endoscopic monitor that supports display resolution up to 8 million pixels, supports DICOM standard, and meets the precise display requirements of endoscopic video and medical images. It has the features of high brightness, high gray scale, high resolution, high uniformity, high color gamut, wide viewing angle, etc., and uses a high reliability and long life Mini-LED backlight system to ensure longterm stability and consistency of the display. It restores the original information of medical images and accurately displays the details of medical images. It is widely used in hospital 4K endoscopic surgery, digital operating room display requirements, surgical teaching and broadcasting, and comprehensive training.

Highlights



Perfect Image Quality

With FHD and 4K resolution displays, it can represent richer image details and more accurate colour reproduction effects, to help surgeons improve surgical efficiency.



Dual Power Supply Design

Dual power supply system, so if one power system fails, the display will switch to another power system seamlessly without affecting the operation process.



Optical Bonding

Employs high-efficient long-life LCD panel with LED backlit which can meet variety of requirements such as lower noise as well as cleanliness.



Abundant I/O Design

Support multi-channel HD and UHD signal input and output, providing you with flexible window layout mode, fully meeting the requirements of DOR.



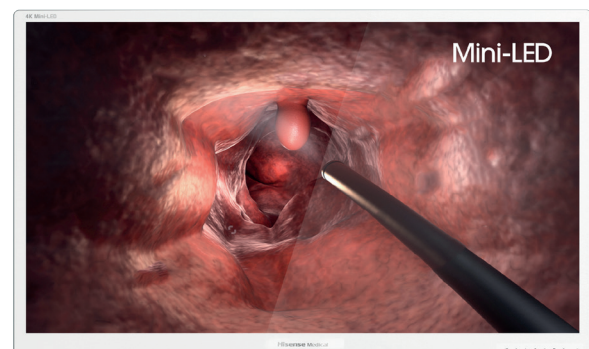
Excellent Industrial Design

With a slim exterior and ultra-narrow bezel design, you have the flexibility to choose the installation solution (suspension/embedded wall).



Mini-LED Backlight Technology

This is the first Mini-LED professional monitor for Endoscopic surgery in the world, using the latest high-end technology. With a 2000cd/m² minimum peaking and a ultra-multi-zone backlight control technology.



Specifications

Display structure

Screen surface treatment	AR+AF protector, bionic protector on the screen
Protection class	Front IP65, monitor IP22
Weight	less than 37kg
Hanging hole spacing	400 x 400 VESA

LED

Panel processing type	Mini-LED backlight
Size	55"
Screen ratio	16:9
Resolution	3840 x 2160
Color depth	8bit + FRC
Refresh rate	60Hz
Backlight	>1000 partitions, support LD
Brightness	700cd/m ² (min), 2000cd/m ² (min peaking)
Contrast ratio	200,000:1
Color gamut	Effective coverage rate ≥ 85% BT.2020 (1976 standard)

Circuit

Video input	HDMI2.0 x 1 DP1.4 x 1 12G-SDI x 1/4 x 3G-SDI x 1 single-link DVI-D x 1 3G/HD-SDI x 1
Video output	HDMI2.0 x 1 12G-SDI x 1/4 x 3G-SDI x 1 3G/HD-SDI x 1
Remote interactive interface	RS485 x 1 (RJ45 terminal, support full duplex)
Service interface	Upstream USB x 1 Upgrade USB x 1 Debug port x 1
DC output	DC5V, 2A, DC12V, 1A
DDC/AUX communication	Yes
Button	Mechanical Button
Sensor	Backlight sensor (backlight stabilization)
Power Indicator	1 LED light, multiplexed with the lock key, green when working, orange when energy saving mode

Function and software

Buttons definition	Regular buttons: lock key, menu, up, down, SWAP; Shortcuts buttons: Display Mode, RPE, INPUT1, INPUT2, Image Mode
Multi-window display	PBP/PIP, three-split screen, four-split screen
Window image quality is independently adjustable	Yes
One-click switching of window layouts	Yes

Display

Signal processing level	14bit
Response time (Maximum)	Single window ≤ 20ms, Multiwindow ≤ 50ms
Color Gamut management	BT.709, BT.2020 can be selected
Field frequency setting	Framelock at 60Hz Other signal frequencies use freerun
Factory default brightness setting	400nits
DICOM PART14	Yes
Image mode	Preset Mode, DICOM Mode, User Mode 1, User Mode 2, User Mode 3, User Mode 4, User Mode 5, User Mode 6
No screen flicker when taking pictures	Yes

Power supply

Power requirements	Certification meets: AC 220V 50HZ Designed to meet: AC100V - AC240V 50/60HZ
Maximum power	≤300W
Standby mode	Default energy saving mode off Only turn off the screen in power saving mode
Dual power supply design	Yes
Equipment type	Type I
Insulation requirements	Type I

Appendix

Data wire	Standard HDMI cable × 1, Optional DP cable × 1, 12G-SDI cable × 1
User Manual	Paper version
Others	N/A

Environment

Temperature	Work: 0 - 40℃ Storage/Transportation: -20 - 60℃
Humidity	Work: 20% - 85% Storage/Transportation: 10% - 90% R.H
Atmospheric pressure	Work: 700hPa - 1060hPa